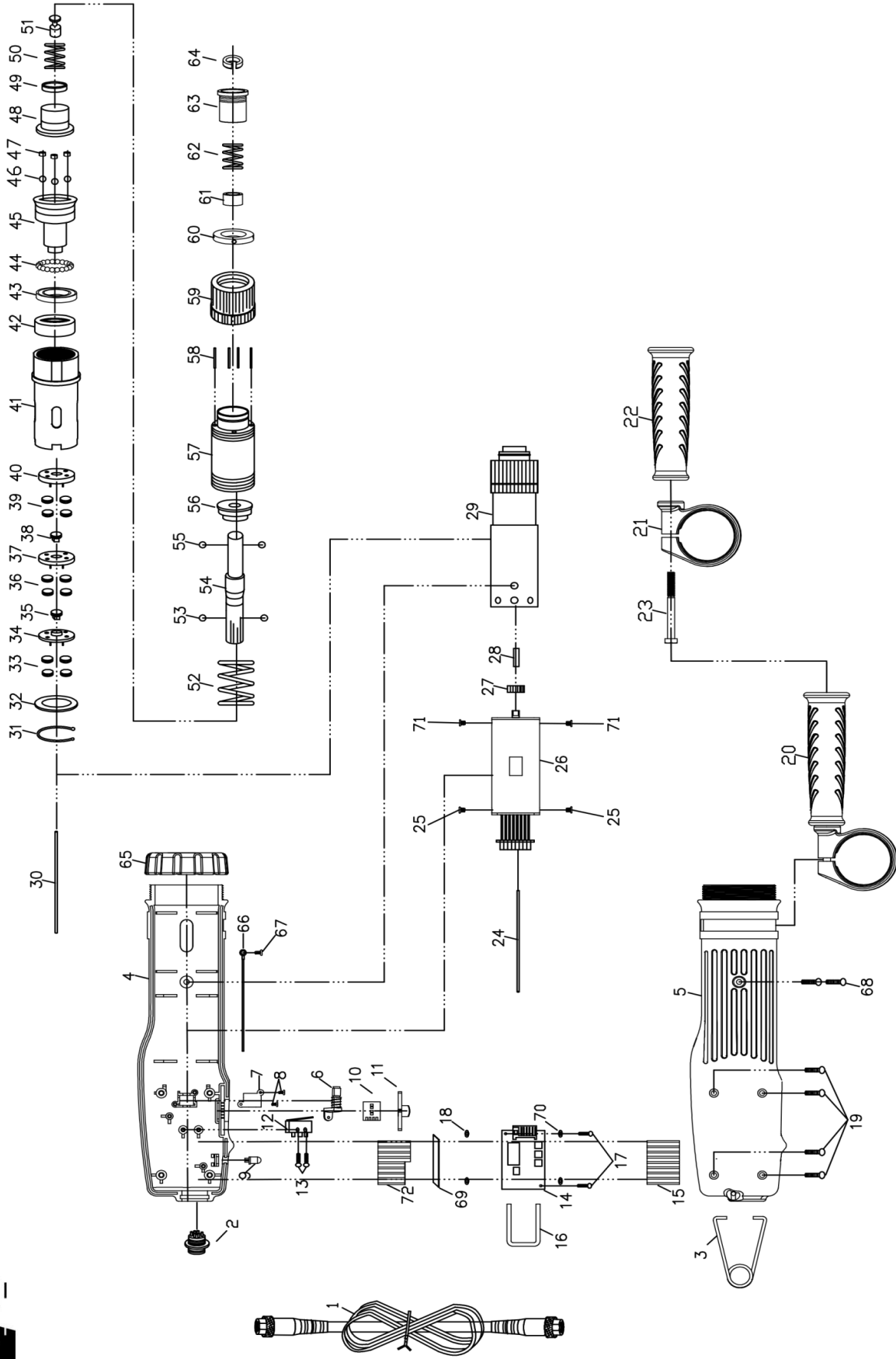


Delta Regis Model #CESL835M-865M(r0) (CE/RoHS)

## Delta Regis Model #CESL835M-865M(-ESD) (r0) (CE/RoHS) - Parts List

Ref #	Part Number	Description	Qty	Ref #	Part Number	Description	Qty
1	DR96-10016M	Cable Assy - 2M, 6 pin	1	35	DR30-10094	Planet Shaft (835M)	1
2	DR40-10164	Connector Assy	1		DR30-10095	Planet Shaft (845M)	1
3	DR80-10208A	Suspension Ring	1		DR30-10096	Planet Shaft (855M)	1
4	DR40-10143	Trigger Assy	1		DR30-10097	Planet Shaft (865M)	1
	DR40-10143ESD	Trigger Assy - ESD Models	1	36	DR30-10098	Central Gear (835M)	1
5	DR80-10219A	Housing (Label Side)	1		DR30-10099	Central Gear (845M)	1
	DR80-10219A-ESD	Housing - ESD Models (Label Side)	1		DR30-10100	Central Gear (855M)	1
6	DR80-10220	Housing	1		DR30-10101	Central Gear (865M)	1
	DR80-10220-ESD	Housing - ESD Models	1	37	DR30-10117	Planet Gear (865M)	4
7	DR15-10065A	Push Rod	1	38	DR30-10103	Planet Shaft (865M)	1
8	DR12-10037	Fixture	1	39	DR30-10104	Central Gear (865M)	1
9	DR10-10046	Screw	2	40	DR30-10105	Planet Gear (835M)	3
10	DR40-10145C	PCB - Start Switch	1		DR30-10106	Planet Gear (845M)	4
11	DR10-10047	Screw	2		DR30-10107	Planet Gear (855M)	3
12	DR40-10149A	LED	1		DR30-10108	Planet Gear (865M)	4
13	DR40-10146B	PCB - Fwd/Rev Switch	1	41	DR30-10109	Planet Shaft (835M)	1
14	DR80-10247	Fwd/Rev Button (835M)	1		DR30-10110	Planet Shaft (845M)	1
	DR80-10248	Fwd/Rev Button (845M)	1		DR30-10111	Planet Shaft (855M)	1
	DR80-10249	Fwd/Rev Button (855M)	1		DR30-10112	Planet Shaft (865M)	1
	DR80-10250	Fwd/Rev Button (865M)	1	42	DR60-10097	Gear Case (835M, 845M, 855M)	1
15	DR40-10188-4BN	Control Board	1		DR60-10098	Gear Case (865M)	1
16	DR40-10151B	Heat Sink	2	43	DR20-10037	Bearing	1
17	DR12-10038A	Clamp	1	44	DR60-10082A	Bearing Plate	1
18	DR10-10045	Screw for PCB	2	45	DR13-10019	Steel Ball - 4.0 mm	18
	DR10-10048	Screw for PCB (ESD Models)	2	46	DR60-10083A	Upper Clutch	1
19	DR40-10156	Insulating Washer (ESD Models)	2	47	DR11-10135	Stop Pilot	1
20	DR10-10032	Screw	4	48	DR13-10022	Steel Ball - 6.0 mm	4
21	DR80-10212	Side Handle Assy	1	49	DR13-10024	Cushion	4
22	DR80-10213	Side Handle Clamp	1	50	DR13-10022	Steel Ball - 6.0 mm	2
23	DR80-10214	Side Handle (less clamp)	1	51	DR31-10031A	Output Shaft - 1/4" hex drive	1
24	DR10-10043	Screw	1		DR31-10026A	Output Shaft - 3/8" sq drive (-SQ)	1
25	DR15-10073	Push Rod	1	52	DR13-10018	Steel Ball - 3.15 mm	2
26	DR54-10032	Motor Assy (835M, 845M, 855M)	1	53	DR16-10029	Clutch Spring Plate	1
	DR54-10033	Motor Assy (865M)	1	54	DR97-83501	Clutch Spring (835M)	1
27	DR10-10049	Screw	2		DR97-84501	Clutch Spring (845M)	1
28	DR30-10084	Gear (835M)	1		DR97-85501	Clutch Spring (855M)	1
	DR30-10085	Gear (845M)	1		DR97-86501	Clutch Spring (865M)	1
	DR30-10086	Gear (855M)	1	55	DR16-10030	Clutch Spring Base	1
	DR30-10087	Gear (865M)	1	56	DR20-10038	Bearing	1
29	DR15-10077	Push Rod	1	57	DR60-10099	Clutch Case	1
30	DR60-10181	Clutch Assy (835M-SQ)	1	58	DR15-10068	Torque Adjusting Pin	4
	DR60-10180	Clutch Assy (835M)	1	59	DR11-10136	Torque Adjusting Nut	1
	DR60-10182	Clutch Assy (845M-SQ)	1	60	DR12-10034	Torque Adj. Jam Nut	1
	DR60-10172	Clutch Assy (845M)	1	61	DR11-10149	Spacer for hex drive	1
	DR60-10184	Clutch Assy (855M-SQ)	1	62	DR14-10058	Bit Spring	2
	DR60-10183	Clutch Assy (855M)	1	63	DR16-10031	Bit Sleeve	1
	DR60-10186	Clutch Assy (865M-SQ)	1	64	DR12-10035	C-Ring	1
	DR60-10185	Clutch Assy (865M)	1	65	DR11-10140	Housing Nut	1
31	DR15-10074	Push Rod	1		DR11-10140-ESD	Housing Nut (ESD Models)	1
32	DR12-10033	C-Ring	1	66	DR40-10163A	Grounding Strip	1
33	DR11-10134	Washer	1	67	DR10-10040	Screw	1
34	DR30-10090	Planet Gear (835M)	3	68	DR10-10054	Screw	2
	DR30-10091	Planet Gear (845M)	4	69	DR14-10056	Trigger Spring	1
	DR30-10092	Planet Gear (855M)	3	70	DR11-10159	Gasket	1
	DR30-10093	Planet Gear (865M)	4	71	DR11-10154	Insulating Washer(ESD Models, 0.3mm)	2
				72	DR11-10166	Washer	1
				73	DR10-10060	Screw	2

subject to change without notice



Delta Regis Model #CESL835PM-865PM (r0) (CE/RoHS)

## Delta Regis Model #CESL835PM-865PM (r0) (CE/RoHS) - Parts List

Ref #	Part Number	Description	Qty
1	DR96-10016M	Cable Assy - 2M, 6pin	1
2	DR40-10164	Connector Assembly	1
3	DR80-10208A	Suspension Ring	1
4	DR80-10226A	Housing Assy. - Std (Label Side)	1
	DR80-10226A-ESD	Housing Assy. - ESD (Label Side)	1
5	DR80-10227	Housing - Std.	1
	DR80-10227-ESD	Housing - ESD	1
6	DR15-10065A	Push Rod	1
7	DR12-10037	Fixture	1
8	DR10-10046	Screw	2
9	DR40-10149A	LED	1
10	DR40-10146B	Control Board - Fwd/Rev	1
11	DR80-10247	Fwd/Rev Button (835PM)	1
	DR80-10248	Fwd/Rev Button (845PM)	1
	DR80-10249	Fwd/Rev Button (855PM)	1
	DR80-10250	Fwd/Rev Button (865PM)	1
12	DR40-10125	Shut-off Switch	1
13	DR10-10052	Screw	2
14	DR40-10188-4BN	Control Board	1
15	DR40-10151B	Heat Sink	2
16	DR12-10038A	Clamp	1
17	DR10-10045	Screw	2
18	DR10-10048	Screw (ESD Models)	2
	DR40-10156	Insulating Washer (ESD Models)	2
19	DR10-10032	Screw	4
20	DR80-10212	Side Handle Assembly	1
21	DR80-10213	Side Handle Clamp	1
22	DR80-10214	Side Handle	1
23	DR10-10043	Screw	1
24	DR15-10073	Push Rod	1
25	DR10-10049	Screw	2
26	DR54-10032	Motor Assembly (835PM-855PM)	1
	DR54-10033	Motor Assembly (865PM)	1
27	DR30-10084	Gear (835PM)	1
	DR30-10085	Gear (845PM)	1
	DR30-10086	Gear (855PM)	1
	DR30-10087	Gear (865PM)	1
28	DR15-10077	Push Rod	1
29	DR60-10152	Clutch Assembly (835PM)	1
	DR60-10153	Clutch Assembly (835PM-SQ)	1
	DR60-10154	Clutch Assembly (845PM)	1
	DR60-10155	Clutch Assembly (845PM-SQ)	1
	DR60-10156	Clutch Assembly (855PM)	1
	DR60-10157	Clutch Assembly (855PM-SQ)	1
	DR60-10158	Clutch Assembly (865PM)	1
	DR60-10159	Clutch Assembly (865PM-SQ)	1
30	DR15-10074	Push Rod	1
31	DR12-10033	C-Ring	1
32	DR11-10134	Washer	1
33	DR30-10090	Planet Gear (835PM)	3
	DR30-10091	Planet Gear (845PM)	4
	DR30-10092	Planet Gear (855PM)	3
	DR30-10093	Planet Gear (865PM)	4

Ref #	Part Number	Description	Qty
34	DR30-10094	Planet Shaft (835PM)	1
	DR30-10095	Planet Shaft (845PM)	1
	DR30-10096	Planet Shaft (855PM)	1
	DR30-10097	Planet Shaft (865PM)	1
35	DR30-10098	Central Gear (835PM)	1
	DR30-10099	Central Gear (845PM)	1
	DR30-10100	Central Gear (855PM)	1
	DR30-10101	Central Gear (865PM)	1
36	DR30-10117	Planet Gear (865PM)	4
37	DR30-10103	Planet Shaft (865PM)	1
38	DR30-10102	Central Gear (865PM)	1
39	DR30-10105	Planet Gear (835PM)	3
	DR30-10106	Planet Gear (845PM)	4
	DR30-10107	Planet Gear (855PM)	3
	DR30-10108	Planet Gear (865PM)	4
40	DR30-10109	Planet Shaft (835PM)	1
	DR30-10110	Planet Shaft (845PM)	1
	DR30-10111	Planet Shaft (855PM)	1
	DR30-10112	Planet Shaft (865PM)	1
41	DR60-10097	Gear Case (835PM-855PM)	1
	DR60-10098	Gear Case (865PM)	1
42	DR20-10037	Bearing	1
43	DR60-10160	Clutch Plate	1
44	DR13-10019	Steel Ball - 4 mm	18
45	DR60-10161	Upper Clutch (835PM-865PM)	1
46	DR13-10022	Steel Ball - 6 mm	4
47	DR13-10025	Cushion	4
48	DR16-10033	Clutch Spring Plate	1
49	DR11-10144	Spring Cap	1
50	DR14-10062	Spring	1
51	DR11-10135	Stop Pilot	1
52	DR97-62901	Clutch Spring (835PM)	1
	DR97-63001	Clutch Spring (845PM)	1
	DR97-64001	Clutch Spring (855PM)	1
	DR97-65001	Clutch Spring (865PM)	1
53	DR13-10022	Steel Ball - 6 mm	2
54	DR31-10028A	Output Shaft, 1/4" Hex	1
	DR31-10029	Output Shaft, 3/8" Sq.Dr.	1
55	DR13-10018	Steel Ball - 3.15 mm	2
56	DR16-10034	Clutch Spring Plate	1
57	DR60-10131	Clutch Case	1
58	DR15-10078	Torque Adjusting Pin	4
59	DR11-10136	Torque Adjusting Nut	1
60	DR12-10034	Jam Nut	1
61	DR11-10149	Spacer	1
62	DR14-10058	Bit Spring	2
63	DR16-10035	Bit Sleeve	1
64	DR12-10041	C-Ring	1
65	DR11-10140	Housing Nut	1
	DR11-10140	Housing Nut - ESD	1
66	DR40-10163	Grounding Strip	1
67	DR10-10040	Screw	1
68	DR10-10054	Screw	2
69	DR11-10159	Gasket	1
70	DR11-10154	Insulating Washer (ESD Models)	2
71	DR10-10060	Screw	2

Subject to change without notice