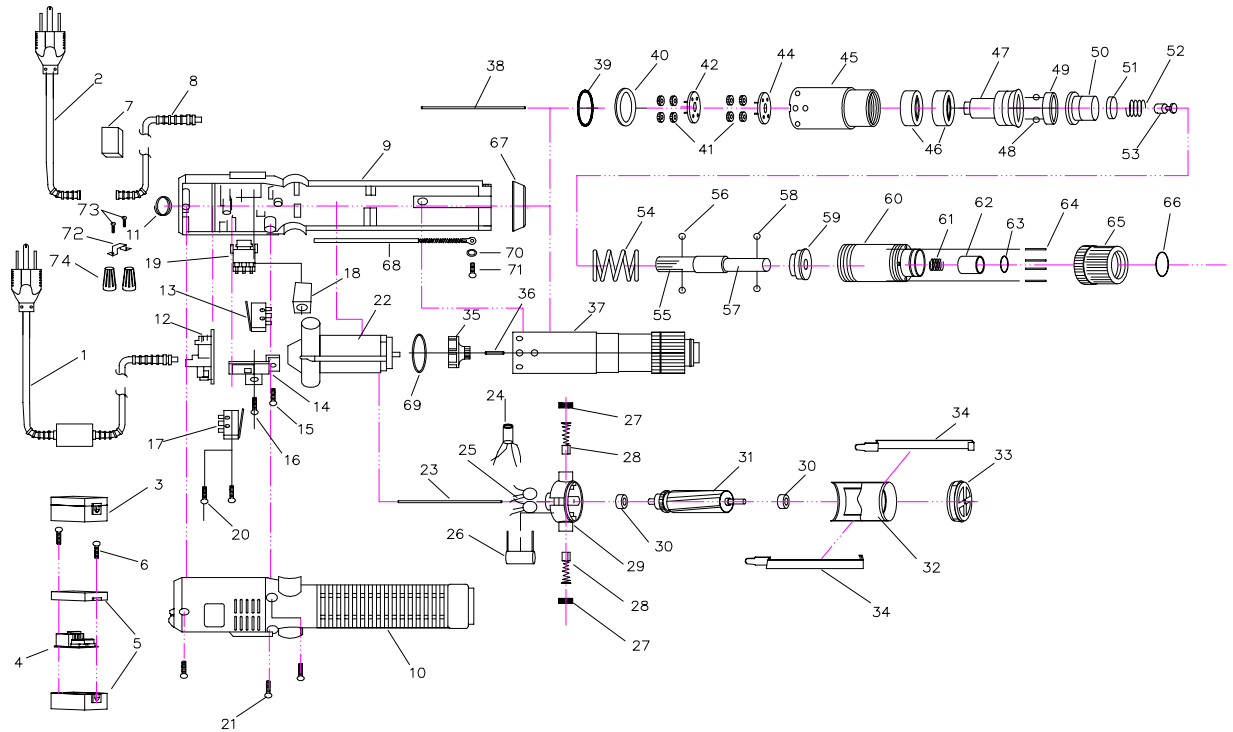


Delta Regis Model #ESL302 - Parts List

Delta Regis Tools, Inc. 3315 Industrial 25th Street, Fort Pierce, FL 34946 Tel: (888) 500-2755 / (772) 465-4302 Fax: (866) 500-7270 / (772) 465-4368 www.deltaregis.com

| Ref # | Part Number | Description | Qty | Ref # | Part Number | Description | Qty |
|-------|-------------|---------------------------|-----|-------|-------------|-----------------------|-----|
| 1 | DR96-10022 | Cable Assembly | 1 | 38 | DR15-10049 | Push Rod | 1 |
| 2 | DR96-10019 | Cable - Short | 1 | 39 | DR60-10050 | Clutch Assembly (302) | 1 |
| 3 | DR40-10084 | EMC Assembly | 1 | 40 | DR15-10051 | Push Rod | 1 |
| 4 | DR40-10082 | P.C.B. - EMC | 1 | 41 | DR12-10025 | C-Ring | 1 |
| 5 | DR80-10164 | EMC Housing | 1 | 42 | DR11-10108 | Washer | 1 |
| 6 | DR10-10036 | Screw | 2 | 43 | DR30-10069 | Planet Gear | 8 |
| 7 | DR40-10080 | Filter | 1 | 44 | DR30-10059 | Rear Planet Shaft | 1 |
| 8 | DR96-10021 | Cable - Long | 1 | 46 | DR30-10066 | Front Planet Shaft | 1 |
| 9 | DR80-10173 | Housing - Label Side | 1 | 47 | DR60-10049 | Gear Case | 1 |
| 10 | DR80-10172 | Housing | 1 | 48 | DR20-10032 | Bearing | 2 |
| 11 | DR40-10108 | Start Lever | 1 | 49 | DR11-10110 | Ring | 1 |
| 12 | DR14-10043 | Trigger Spring | 1 | 50 | DR60-10027 | Upper Clutch Head | 1 |
| 13 | DR80-10141 | Suspension Ring | 1 | 51 | DR11-10116 | Stop Pilot | 1 |
| 14 | DR40-10107 | Control Board | 1 | 52 | DR13-10019 | Steel Ball - 4mm | 4 |
| 15 | DR40-10087 | Microswitch | 1 | 53 | DR31-10018 | Output Shaft | 1 |
| 16 | DR40-10079 | Brake Resistor | 1 | 54 | DR13-10017 | Ball - 2.5mm | 2 |
| 17 | DR12-10022 | Switch Base | 1 | 55 | DR16-10023 | Clutch Spring Plate | 1 |
| 18 | DR40-10104 | Microswitch | 1 | 56 | DR97-30201 | Clutch Spring | 1 |
| 19 | DR10-10038 | Screw | 1 | 57 | DR16-10024 | Clutch Spring Seat | 1 |
| 20 | DR10-10039 | Screw | 1 | 58 | DR12-10019 | C-Ring | 1 |
| 21 | DR40-10072 | Fwd/Rev Switch | 1 | 59 | DR60-10026 | Clutch Case | 1 |
| 22 | DR10-10037 | Screw | 2 | 60 | DR14-10046 | Bit Retainer Spring | 1 |
| 23 | DR10-10032 | Screw | 3 | 61 | DR16-10018 | Bit Sleeve | 1 |
| 24 | DR54-10018 | Motor Assembly (302) | 1 | 62 | DR12-10010 | C-Ring | 1 |
| 25 | DR15-10052 | Push Rod | 1 | 63 | DR15-10042 | Torque Adjusting Pin | 4 |
| 26 | DR40-10050 | Coil | 1 | 64 | DR11-10109 | Torque Adjusting Nut | 1 |
| 27 | DR40-10069 | Capacitor | 2 | 65 | DR12-10015 | C-Ring | 1 |
| 28 | DR40-10106 | Capacitor | 1 | 66 | DR11-10126 | Housing Nut | 1 |
| 29 | DR55-10012 | Brush Cap | 2 | 67 | DR40-10103 | Ground Wire | 1 |
| 30 | DR55-10008 | Carbon Brushes - Pair | 1 | 68 | DR11-10125 | Isolation Washer | 1 |
| 31 | DR51-10031 | Motor End Cover - Top | 1 | 69 | DR11-10120 | Washer | 1 |
| 32 | DR20-10033 | Bearing | 2 | 70 | DR10-10040 | Screw | 1 |
| 33 | DR52-10033 | Armature (302) | 1 | 71 | DR12-10024 | Clamp | 1 |
| 34 | DR50-10026 | Motor Yoke Assembly (302) | 1 | 72 | DR10-10041 | Screw | 2 |
| 35 | DR51-10030 | Motor End Cover - Bottom | 1 | 73 | DR40-10105 | Wire Connector | 2 |
| 36 | DR12-10026 | Motor Clip | 2 | | | | |
| 37 | DR52-10026 | Fan | 1 | | | | |



Delta Regis Model #ESL302P - Parts List

Delta Regis Tools, Inc. 3315 Industrial 25th Street, Fort Pierce, FL 34946 Tel: (888) 500-2755 / (772) 465-4302 Fax: (866) 500-7270 / (772) 465-4368 www.deltaregis.com

| Ref # | Part Number | Description | Qty | Ref # | Part Number | Description | Qty |
|-------|-------------|---------------------------|-----|-------|-------------|----------------------|-----|
| 1 | DR96-10022 | Cable Assembly | 1 | 38 | DR15-10054 | Push Rod | 1 |
| 2 | DR96-10019 | Cable - Short | 1 | 39 | DR12-10025 | C-Ring | 1 |
| 3 | DR40-10084 | EMC Assembly | 1 | 40 | DR11-10108 | Washer | 1 |
| 4 | DR40-10082 | P.C.B. - EMC | 1 | 41 | DR30-10069 | Planet Gear | 8 |
| 5 | DR80-10164 | EMC Housing | 1 | 42 | DR30-10059 | Rear Planet Shaft | 1 |
| 6 | DR10-10036 | Screw | 2 | 44 | DR30-10066 | Front Planet Shaft | 1 |
| 7 | DR40-10080 | Filter | 1 | 45 | DR60-10049 | Gear Case | 1 |
| 8 | DR96-10021 | Cable - Long | 1 | 46 | DR20-10032 | Bearing | 2 |
| 9 | DR80-10179 | Housing - Label Side | 1 | 47 | DR60-10055 | Upper Clutch (302P) | 1 |
| 10 | DR80-10178 | Housing | 1 | 48 | DR13-10019 | Steel Ball - 4mm | 2 |
| 11 | DR80-10141 | Suspension Ring | 1 | 49 | DR11-10110 | Ring | 1 |
| 12 | DR40-10111 | Control Board | 1 | 50 | DR16-10026 | Clutch Spring Plate | 1 |
| 13 | DR40-10104 | Microswitch | 1 | 51 | DR11-10128 | Spring Cap | 1 |
| 14 | DR12-10027 | Switch Base | 1 | 52 | DR14-10054 | Spring | 1 |
| 15 | DR10-10038 | Screw | 1 | 53 | DR11-10116 | Stop Pilot | 1 |
| 16 | DR10-10039 | Screw | 1 | 54 | DR97-50301 | Clutch Spring | 1 |
| 17 | DR40-10090 | Microswitch | 1 | 55 | DR31-10021 | Shaft | 1 |
| 18 | DR40-10079 | Brake Resistor | 1 | 56 | DR13-10019 | Steel Ball - 4mm | 2 |
| 19 | DR40-10072 | Fwd/Rev Switch | 1 | 57 | DR31-10022 | Bit Holder | 1 |
| 20 | DR10-10037 | Screw | 2 | 58 | DR13-10017 | Ball - 2.5mm | 2 |
| 21 | DR10-10032 | Screw | 3 | 59 | DR11-10111 | Clutch Spring Plate | 1 |
| 22 | DR54-10018 | Motor Assembly (302) | 1 | 60 | DR60-10026 | Clutch Case | 1 |
| 23 | DR15-10053 | Push Rod | 1 | 61 | DR14-10046 | Bit Retainer Spring | 1 |
| 24 | DR40-10050 | Coil | 1 | 62 | DR16-10018 | Bit Sleeve | 1 |
| 25 | DR40-10069 | Capacitor | 2 | 63 | DR12-10010 | C-Ring | 1 |
| 26 | DR40-10106 | Capacitor | 1 | 64 | DR15-10042 | Torque Adjusting Pin | 4 |
| 27 | DR55-10012 | Brush Cap | 2 | 65 | DR11-10109 | Torque Adjusting Nut | 1 |
| 28 | DR55-10008 | Carbon Brushes - Pair | 2 | 66 | DR12-10015 | C-Ring | 1 |
| 29 | DR51-10031 | Motor End Cover - Top | 1 | 67 | DR11-10126 | Housing Nut | 1 |
| 30 | DR20-10033 | Bearing | 2 | 68 | DR40-10103 | Ground Wire | 1 |
| 31 | DR52-10033 | Armature (302) | 1 | 69 | DR11-10125 | Isolation Washer | 1 |
| 32 | DR50-10026 | Motor Yoke Assembly (302) | 1 | 70 | DR11-10120 | Washer | 1 |
| 33 | DR51-10030 | Motor End Cover - Bottom | 1 | 71 | DR10-10040 | Screw | 1 |
| 34 | DR12-10026 | Motor Clip | 2 | 72 | DR12-10024 | Clamp | 1 |
| 35 | DR52-10026 | Fan | 1 | 73 | DR10-10041 | Screw | 2 |
| 36 | DR15-10049 | Push Rod | 1 | 74 | DR40-10105 | Wire Connector | 2 |
| 37 | DR60-10056 | Clutch Assembly (302P) | 1 | | | | |