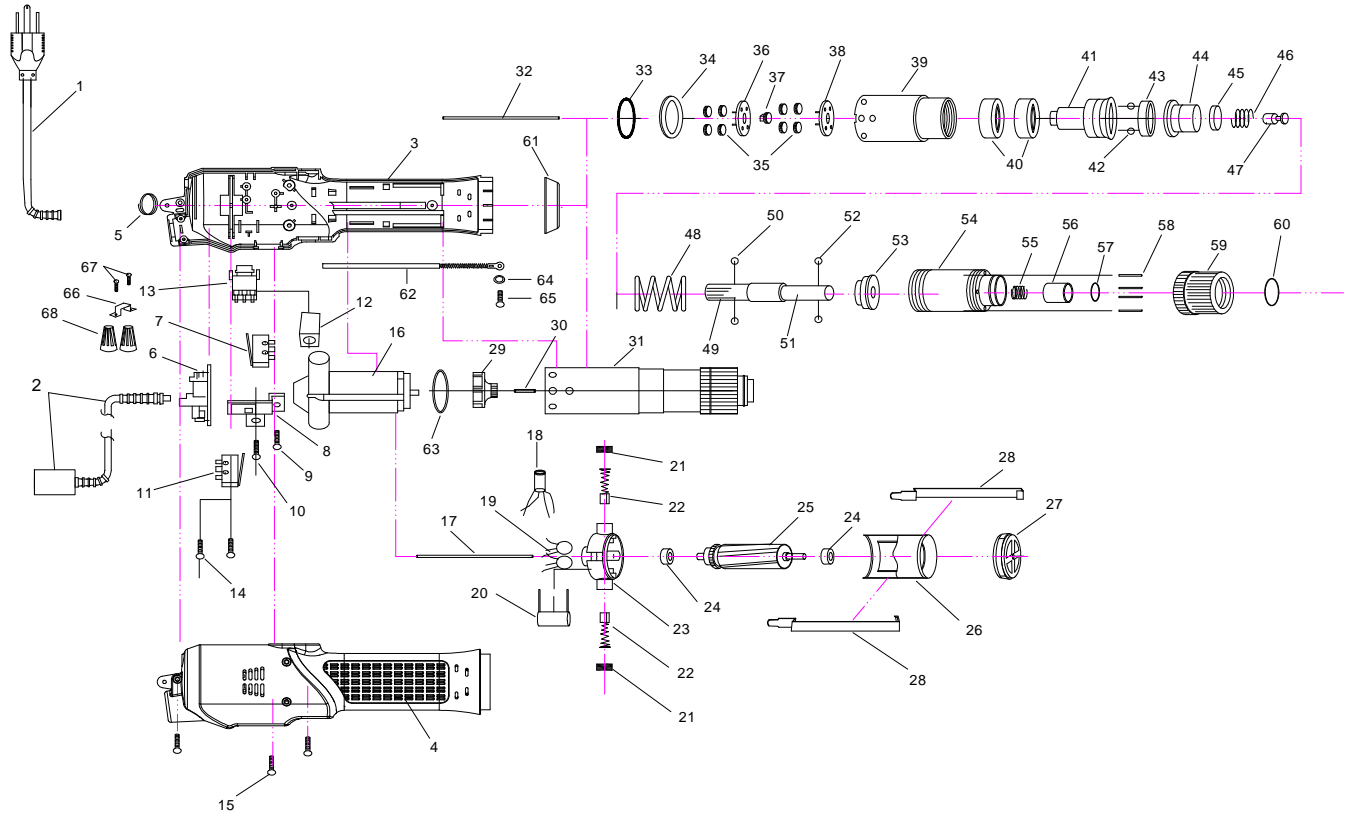


Delta Regis Model #ESL383E, 384E, 385E (220VAC, CE/RoHS) - Parts List

Delta Regis Tools, Inc. 3315 Industrial 25th Street, Fort Pierce, FL 34946 Tel: (888) 500-2755 / (772) 465-4302 Fax: (866) 500-7270 / (772) 465-4368 www.deltaregis.com

Ref #	Part Number	Description	Qty	Ref #	Part Number	Description	Qty
1	DR96-10032	Cable, 1 ft., EU Plug	1	36	DR11-10108	Washer	1
2	DR40-10122	EMC Box Assy, CE w/9' Cable	1	37	DR30-10080	Planet Gear (ESL383E)	6
3	DR80-10199	Housing - Label Side	1		DR30-10068	Planet Gear (ESL384E)	8
4	DR80-10198	Housing	1		DR30-10069	Planet Gear (ESL385E)	8
5	DR40-10123	Start Lever	1	38	DR30-10064	Rear Planet Shaft (ESL383E)	1
6	DR14-10055	Trigger Spring	1		DR30-10063	Rear Planet Shaft (ESL384E)	1
7	DR80-10141	Suspension Ring	1		DR30-10059	Rear Planet Shaft (ESL385E)	1
8	DR40-10124	Control Board	1	39	DR30-10081	Gear (ESL383E)	1
9	DR40-10125	Shut-off Switch	1	40	DR30-10064	Front Planet Shaft (ESL383E)	1
10	DR40-10126	Brake Resistor	1		DR30-10065	Front Planet Shaft (ESL384E)	1
11	DR12-10022	Switch Base	1		DR30-10066	Front Planet Shaft (ESL385E)	1
12	DR40-10125	Start Switch	1	41	DR60-10065	Gear Case (ESL383E)	1
13	DR10-10038	Screw	1		DR60-10049	Gear Case (ESL384E/385E)	1
14	DR10-10039	Screw	1	42	DR20-10032	Bearing	2
15	DR40-10085	Fwd/Rev Switch (ESL383E)	1	43	DR11-10110	Ring	1
	DR40-10086	Fwd/Rev Switch (ESL384E)	1	44	DR60-10027	Upper Clutch Head	1
	DR40-10072	Fwd/Rev Switch (ESL385E)	1	45	DR11-10133	Stop Pilot	1
16	DR10-10037	Screw	2	46	DR13-10019	Steel Ball - 4.0 mm	2
17	DR10-10032	Screw	3	47	DR13-10019	Steel Ball - 4.0 mm	2
18	DR54-10027	Motor assembly (383E/384E/385E CE)	1	48	DR31-10024	Output Shaft (ESL383E/384E/385E)	1
19	DR15-10052	Push Rod	1	49	DR13-10017	Ball - 2.5 mm	2
20	DR40-10113	Coil	1	50	DR16-10027	Clutch Spring Plate	1
21	DR40-10127	Capacitor	2	51	DR97-38301	Clutch Spring (ESL383E)	1
22	DR40-10128	Capacitor	1		DR97-38401	Clutch Spring (ESL384E)	1
23	DR55-10015	Brush Cap	2		DR97-30201	Clutch Spring (ESL385E)	1
24	DR55-10013	Carbon Brush - Pair	2	52	DR11-10111	Clutch Spring Plate	1
25	DR51-10036	Motor End Cover, Top	1	53	DR60-10026	Clutch Case	1
26	DR20-10033	Bearing	2	54	DR14-10046	Bit Retainer Spring	1
27	DR52-10037	Armature (383E/384E/385E CE)	1	55	DR16-10018	Bit Sleeve	1
28	DR50-10026	Motor Yoke Assembly	1	56	DR12-10010	C Ring	1
29	DR51-10030	Motor End Cover, Bottom	1	57	DR15-10042	Torque Adjusting Pin	4
30	DR12-10029	Motor Clip	2	58	DR11-10109	Torque Adjusting Nut	1
31	DR52-10024	Fan (ESL383E)	1	59	DR12-10015	C Ring	1
	DR52-10025	Fan (ESL384E)	1	60	DR11-10126	Housing Nut	1
	DR52-10026	Fan (ESL385E)	1	61	DR40-10129	Grounding Strip	1
32	DR15-10049	Push Rod	1	62	DR11-10125	Isolation Washer	1
33	DR60-10062	Clutch Assembly (ESL383E)	1	63	DR11-10120	Washer	1
	DR60-10063	Clutch Assembly (ESL384E)	1	64	DR10-10040	Screw	1
	DR60-10064	Clutch Assembly (ESL385E)	1	65	DR12-10024	Clamp	1
34	DR15-10051	Push Rod	1	66	DR10-10041	Screw	2
35	DR12-10025	C Ring	1	67	DR40-10105	Wire Connector	2



Delta Regis Model #ESL383PE, 384PE, 385PE (220VAC, CE/RoHS) - Parts List

Delta Regis Tools, Inc. 3315 Industrial 25th Street, Fort Pierce, FL 34946 Tel: (888) 500-2755 / (772) 465-4302 Fax: (866) 500-7270 / (772) 465-4368 www.deltaregis.com

Ref #	Part Number	Description	Qty	Ref #	Part Number	Description	Qty
1	DR96-10032	Cable, 1 ft., EU Plug	1	36	DR30-10064	Rear Planet Shaft (ESL383PE)	1
2	DR40-10122	EMC Box Assy, CE w/9' Cable	1		DR30-10063	Rear Planet Shaft (ESL384PE)	1
3	DR80-10201	Housing - Label Side	1		DR30-10059	Rear Planet Shaft (ESL385PE)	1
4	DR80-10200	Housing	1	37	DR30-10081	Gear (ESL383E)	1
5	DR80-10141	Suspension Ring	1	38	DR30-10064	Front Planet Shaft (ESL383PE)	1
6	DR40-10130	Control Board	1		DR30-10065	Front Planet Shaft (ESL384PE)	1
7	DR40-10125	Start Switch	1		DR30-10066	Front Planet Shaft (ESL385PE)	1
8	DR12-10022	Switch Base	1	39	DR60-10065	Gear Case (ESL383PE)	1
9	DR10-10038	Screw	1		DR60-10049	Gear Case (ESL384PE, 385PE)	1
10	DR10-10039	Screw	1	40	DR20-10032	Bearing	2
11	DR40-10125	Shut-off Switch	1	41	DR60-10069	Upper Clutch	1
12	DR40-10126	Brake Resistor	1	42	DR13-10019	Steel Ball - 4.0 mm	2
13	DR40-10085	Fwd/Rev Switch (ESL383PE)	1	43	DR11-10127	Ring	1
	DR40-10086	Fwd/Rev Switch (ESL384PE)	1	44	DR16-10028	Clutch Spring Plate	1
	DR40-10072	Fwd/Rev Switch (ESL385PE)	1	45	DR11-10128	Spring Cap	1
14	DR10-10037	Screw	2	46	DR14-10054	Spring	1
15	DR10-10032	Screw	3	47	DR11-10116	Stop Pilot	1
16	DR54-10027	Motor Assembly (383PE/384PE/385PE CE)	1	48	DR97-38302	Clutch Spring (ESL383PE)	1
17	DR15-10053	Push Rod	1		DR97-38402	Clutch Spring (ESL384PE)	1
18	DR40-10113	Coil	1		DR97-50301	Clutch Spring (ESL385PE)	1
19	DR40-10127	Capacitor	2	49	DR31-10021	Output Shaft	1
20	DR40-10128	Capacitor	1	50	DR13-10019	Steel Ball - 4.0 mm	2
21	DR55-10015	Brush Cap	2	51	DR31-10022	Bit Holder	1
22	DR55-10013	Carbon Brush - Pair	2	52	DR13-10017	Ball - 2.5mm	2
23	DR51-10036	Motor End Cover, Top	1	53	DR11-10111	Clutch Spring Plate	1
24	DR20-10033	Bearing	2	54	DR60-10026	Clutch Case	1
25	DR52-10037	Armature (383PE/384PE/385PE CE)	1	55	DR14-10046	Bit Retainer Spring	1
26	DR50-10026	Motor Yoke Assembly	1	56	DR16-10018	Bit Sleeve	1
27	DR51-10030	Motor End Cover, Bottom	1	57	DR12-10010	C Ring	1
28	DR12-10029	Motor Clip	2	58	DR15-10042	Torque Adjusting Pin	4
29	DR52-10024	Fan (ESL383PE)	1	59	DR11-10109	Torque Adjusting Nut	1
	DR52-10025	Fan (ESL384PE)	1	60	DR12-10015	C Ring	1
	DR52-10026	Fan (ESL385PE)	1	61	DR11-10126	Housing Nut	1
30	DR15-10049	Push Rod	1	62	DR40-10129	Grounding Strip	1
31	DR60-10066	Clutch Assembly (ESL383PE)	1	63	DR11-10125	Isolation Washer	1
	DR60-10067	Clutch Assembly (ESL384PE)	1	64	DR11-10120	Washer	1
	DR60-10068	Clutch Assembly (ESL385PE)	1	65	DR10-10040	Screw	1
32	DR15-10054	Push Rod	1	66	DR12-10024	Clamp	1
33	DR12-10025	C Ring	1	67	DR10-10041	Screw	2
34	DR11-10108	Washer	1	68	DR40-10105	Wire Connector	2
35	DR30-10080	Planet Gear (ESL383PE)	6				
	DR30-10068	Planet Gear (ESL384PE)	8				
	DR30-10069	Planet Gear (ESL385PE)	8				